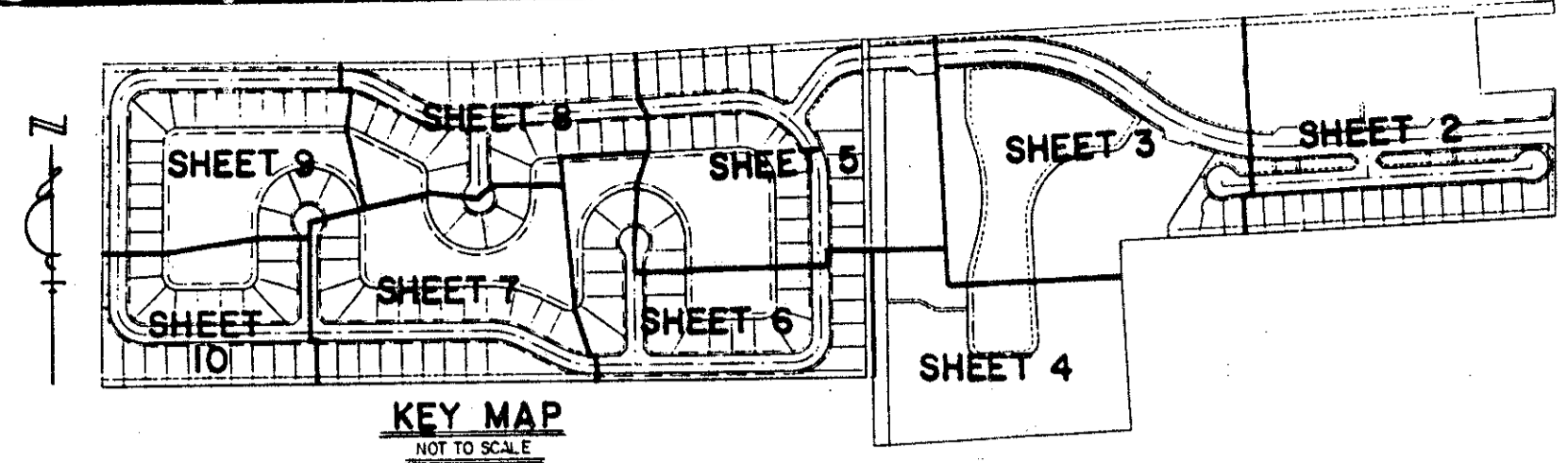


WHITEHORSE ESTATES

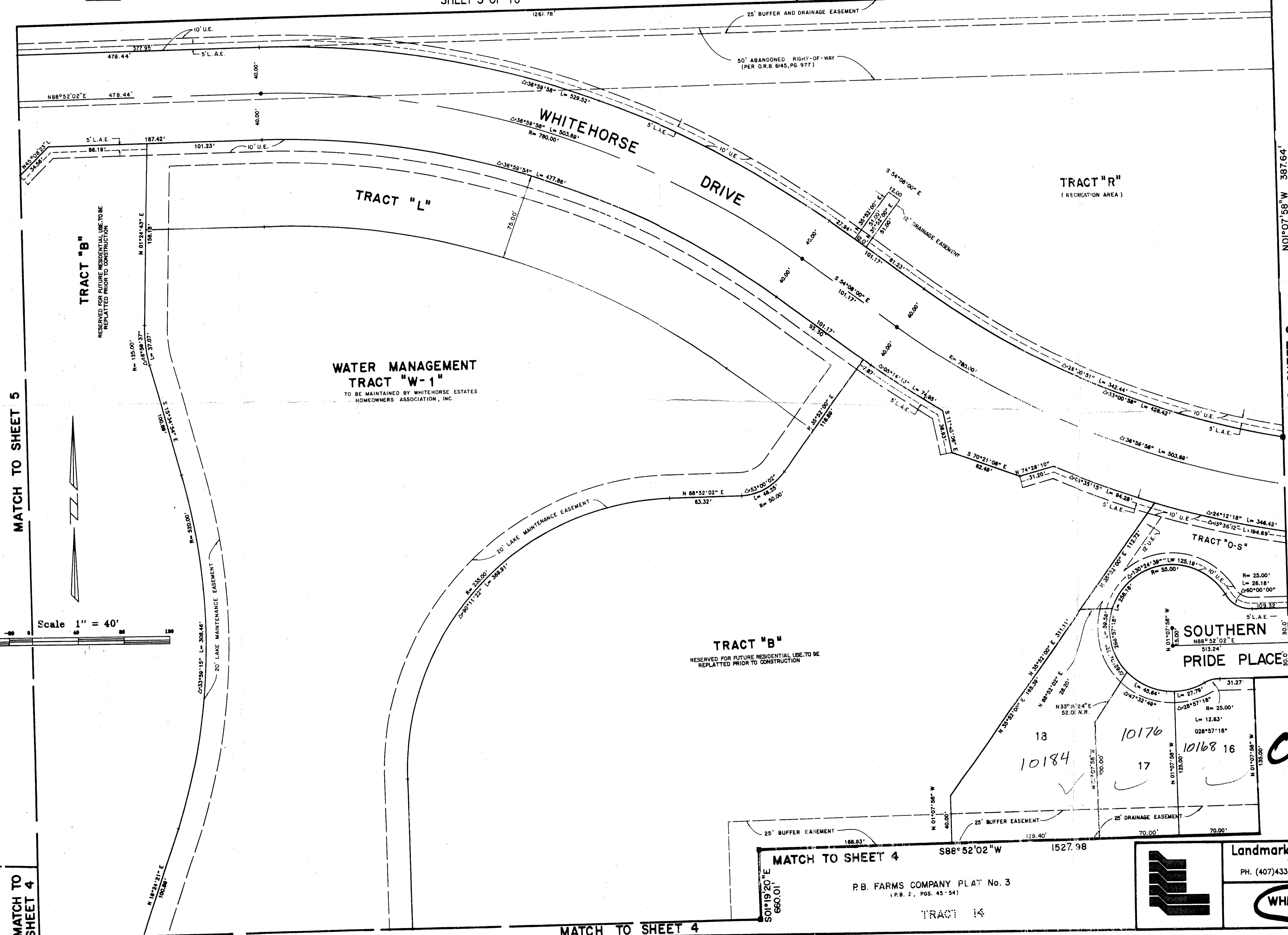
PALM VIEW LAKES A PLANNED UNIT DEVELOPMENT
 BEING A REPLAT OF A PORTION OF TRACTS 5 THRU 13 INCLUSIVE, BLOCK 26, PALM BEACH
 FARMS COMPANY PLAT NO. 3, PLAT BOOK 2, PAGES 45 THRU 54 INCLUSIVE, PUBLIC
 RECORDS OF PALM BEACH COUNTY, FLORIDA AND A PORTION OF THE NORTHWEST QUARTER
 OF SECTION 24, TOWNSHIP 44 SOUTH, RANGE 41 EAST, PALM BEACH COUNTY, FLORIDA.
 SHEET 3 OF 10
 JULY, 1994.

P.B. FARMS COMPANY PLAT No. 3
 (P.B. 2, PGS. 45-54)



KEY MAP
 NOT TO SCALE

STATE OF FLORIDA
 COUNTY OF PALM BEACH ss
 This Plat was filed for record at
 _____ M. this _____ day of _____, 19____
 and duly recorded in Plat Book No. _____
 on Page _____
 Dorothy H. Wilken, Clerk of the Circuit Court
 By _____ D.C.



MATCH TO SHEET 5

MATCH TO SHEET 4

MATCH TO SHEET 2

MATCH TO SHEET 4

MATCH TO SHEET 4

WHITEHORSE ESTATES
 PLAT 64
 B
 89-1041
 SAME TAZ-736

PET. 86-100(A)
 5/2/4/G

0517-001

73/64

Landmark Surveying & Mapping Inc.
 1850 FOREST HILL BOULEVARD
 PH. (407)433-5405 SUITE 100 W.P.B. FLORIDA

WHITEHORSE ESTATES

P.B. FARMS COMPANY PLAT No. 3
 (P.B. 2, PGS. 45-54)

TRACT 14